

State of Wyoming Corner Record

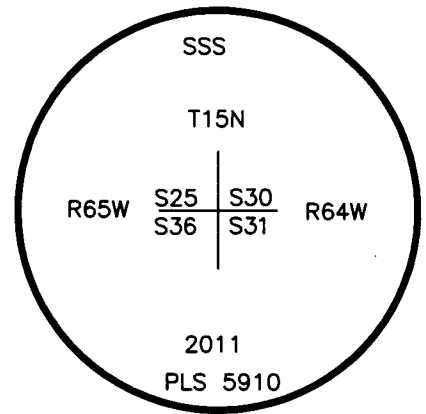
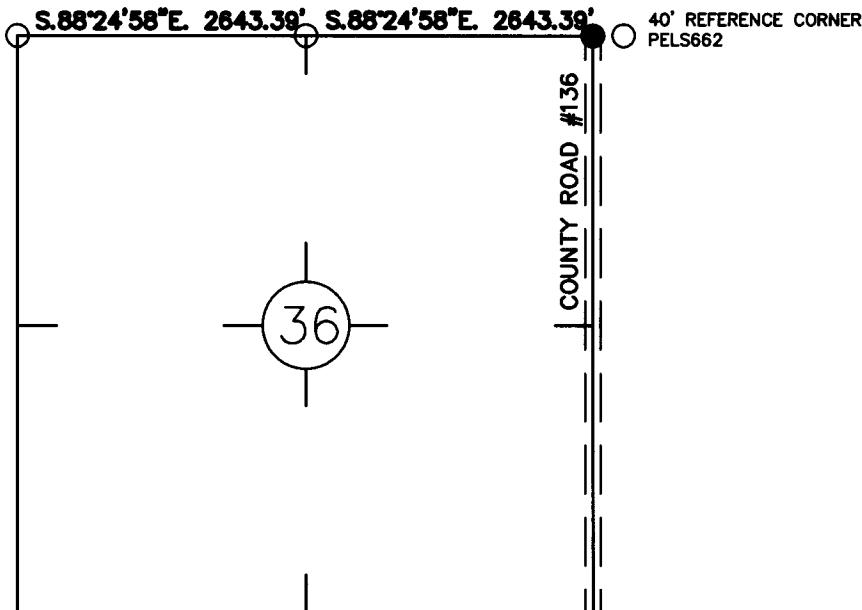
(In compliance with the *CORNER PERPETUATION AND FILING ACT*, Wyoming Statutes, 1997 Section 33-29-140 et. seq., and the Rules and Regulations of the Board of Professional Engineers and Professional Land Surveyors)

Reverse side of this form may be used if more space is needed.

Record of original survey and citation of source of historical information (if corner is lost or obliterated). Description of corner monumentation evidence found and/or monument and accessories established to perpetuate the location of this corner. Sketch of relative location of monument, accessories, and reference points with course and distance to adjacent corner(s) (if determined in this survey). Method and rationale for reestablishment of lost or obliterated corner.

FOUND: 40' REFERENCE CORNER
PELS662
SET 2 1/2" AL CAP
ON 5/8"x24" REBAR
FROM REFERENCES

Monument location



Monument Inscription

Date of Field Work: 1-2011

Office Reference: 10358

Cross Index Plat

	1	2	3	4	5	6	7	8	9	10	11	12	13	14	15	16	17	18	19	20	21	22	23	24	25		
A	+	+	+	+	+	+	+	+	+	+	+	+	+	+	+	+	+	+	+	+	+	+	+	+	+	B	
B	+	6	+	5	+	4	+	3	+	2	+	1	+	C												D	
C	+	+	+	+	+	+	+	+	+	+	+	+	+	E													F
D	+	+	+	+	+	+	+	+	+	+	+	+	+	G													H
E	+	+	+	+	+	+	+	+	+	+	+	+	+	I													J
F	+	+	+	+	+	+	+	+	+	+	+	+	+	K													L
G	+	7	+	8	+	9	+	10	+	11	+	12	+	M													N
H	+	+	+	+	+	+	+	+	+	+	+	+	+	O													P
J	+	+	+	+	+	+	+	+	+	+	+	+	+	Q													R
K	+	+	+	+	+	+	+	+	+	+	+	+	+	S													S
L	+	18	+	17	+	16	+	15	+	14	+	13	+	T													T
M	+	+	+	+	+	+	+	+	+	+	+	+	+	U													U
N	+	+	+	+	+	+	+	+	+	+	+	+	+	V													V
O	+	+	+	+	+	+	+	+	+	+	+	+	+	W													W
P	+	19	+	20	+	21	+	22	+	23	+	24	+	X													X
Q	+	+	+	+	+	+	+	+	+	+	+	+	+	Y													Y
R	+	+	+	+	+	+	+	+	+	+	+	+	+	Z													Z
S	+	+	+	+	+	+	+	+	+	+	+	+	+	1													1
T	+	30	+	29	+	28	+	27	+	26	+	25	+	2													2
U	+	+	+	+	+	+	+	+	+	+	+	+	+	3													3
V	+	+	+	+	+	+	+	+	+	+	+	+	+	4													4
W	+	+	+	+	+	+	+	+	+	+	+	+	+	5													5
X	+	31	+	32	+	33	+	34	+	35	+	36	+	6													6
Y	+	+	+	+	+	+	+	+	+	+	+	+	+	7													7
Z	+	+	+	+	+	+	+	+	+	+	+	+	+	8													8
	1	2	3	4	5	6	7	8	9	10	11	12	13	14	15	16	17	18	19	20	21	22	23	24	25		

Firm/Agency, Address
STEIL SURVEYING SERV., LLC
1102 WEST 19TH STR.
CHEYENNE, WY 82001
(307)634-7273

This corner record was prepared by me or under my direction and supervision.

SEAL & SIGNATURE



RECORDED 3/17/2011 AT 8:58 AM REC# 564917 JK# 2212 PG# 270
DEBRA K. LATHROP, CLERK OF LARAMIE COUNTY, WY PAGE 1 OF 1

Corner Name NW COR Section 36, T 15 N, R 65 W, 6th P.M.
County: LARAMIE Wyoming
SBRPEPLS/PLSW: March 1994; PLSW January 1998

Cross-Index No.: V-25